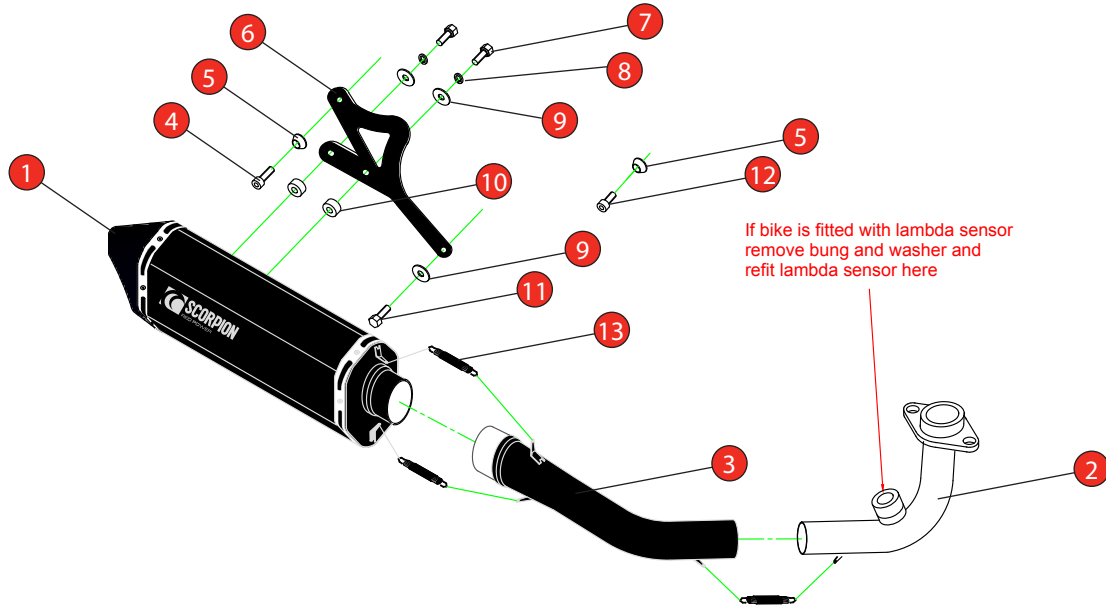
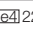


<b>Bike/Year</b>	Vespa GTS 125 09-17, GTS 250 05-13, GTS 300 08-Current, GTV 250 06-13, GTV 300 10-Current	<b>Part No.</b>	RVE-212
		<b>Fit Kit</b>	Z039.10529
<b>Notes</b>	Where not supplied use original fittings	<b>dB Killer</b>	SCEXDBK34 - (Type NN)

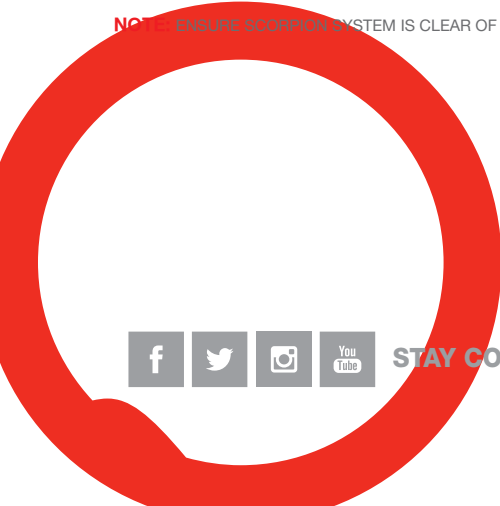
Estimated Fitting Time: 60 Minutes



NO.	PART NO.	DESCRIPTION	QTY
1	RSC312	300mm Serket Silencer	1
2	CP811	Header Pipe	1
3	CP812C	Connecting Pipe	1
<b>Fit Kit - Z039.10529</b>			
4	Z017.10073	M8 x 25mm Cap Head Bolt	1
5	Z026.20068	Alloy Bolt Finisher	2
6	Z015.31248	Mounting Bracket	1
7	Z017.10048	M8 x 25mm Hex Head Bolt	2
8	z017.10064	M8 Spring Washer	2
9	Z017.10825	M8 x 25mm Washer	3
10	Z026.10100	5mm Alloy Spacer	2
11	z017.10044	M8 x 20mm Hex Head Bolt	1
12	Z017.10070	M8 x 12mm Cap Head Bolt	1
13	Z028.10030	Rubber Coated Spring	3

E-MARK	SC-39  2207
DATE	29/11/2018
ISSUE	02
AUTHORISED	J.Harkin

NOTE: ENGLAND SCORPION SYSTEM IS CLEAR OF MOVING PARTS AND ALL ORIGINAL FUNCTIONS WORK CORRECTLY.



STAY CONNECTED TO RED POWER.

<b>Bike/Year</b>	Vespa GTS 125 09-17, GTS 250 05-13, GTS 300 08-Current, GTV 250 06-13, GTV 300 10-Current	<b>Part No.</b>	RVE-212
		<b>Fit Kit</b>	Z039.10529
<b>Notes</b>	Where not supplied use original fittings	<b>dB Killer</b>	SCEXDBK34 (TYPE NN)



A) Remove original exhaust, taking care not to lose or damage any of the original components.

B) Fit the lambda Sensor into the Scorpion header pipe and tighten fully.

C) Using the original nuts loosely fit the header pipe to the engine.

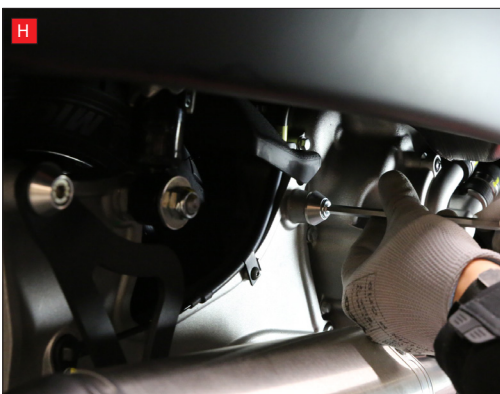
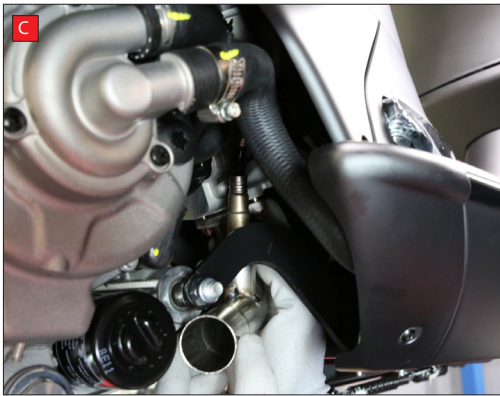
D) Slide the connecting pipe on to the header pipe.

E) Loosely fit the bracket to the silencer using the correct bolts and spacers and shown in the line diagram above.

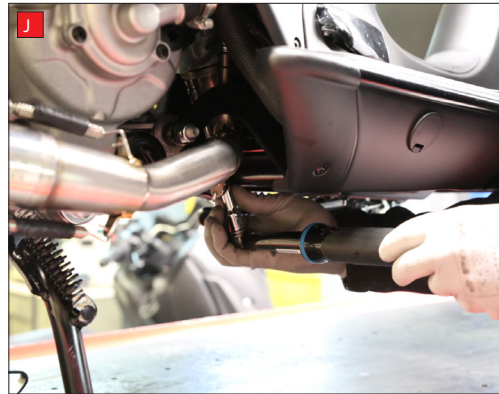
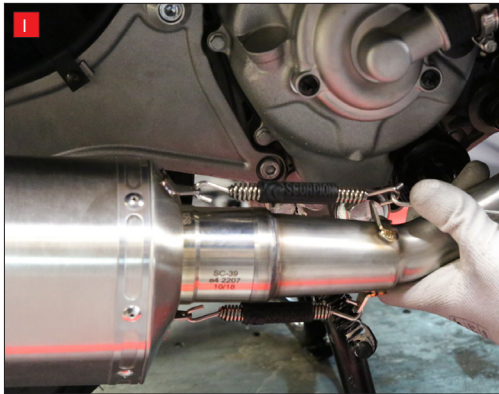
F) Slide the silencer on to the connecting pipe.

G) Loosely bolt the bracket to the bike.

H) Use the M8 x 12mm cap head bolt and Alloy bolt finisher to blank off the spare original mounting point hole. Fully tighten this in to the frame.



<b>Bike/Year</b>	Vespa GTS 125 09-17, GTS 250 05-13, GTS 300 08-Current, GTV 250 06-13, GTV 300 10-Current	<b>Part No.</b>	RVE-212
		<b>Fit Kit</b>	Z039.10529
<b>Notes</b>	Where not supplied use original fittings	<b>dB Killer</b>	SCEXDBK34 (TYPE NN)

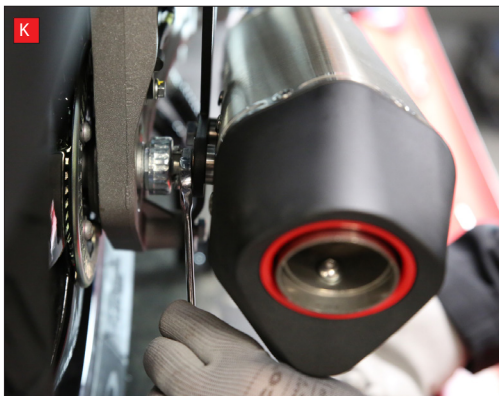


I) Use the rubber coated springs to secure the fitting between the connecting pipe and silencer, and the fitting between the header pipe and connecting pipe.

J) Once happy the alignment of the system, tighten the header pipe (between 12-13 Nm).

K) Fully tighten the rest of the system.

L) When fitted, take bike for a short test run, upon return allow bike to cool and check all nuts and bolts are secure.



<b>Bike/Year</b>	Vespa GTS 125 09-17, GTS 250 05-13, GTS 300 08-Current, GTV 250 06-13, GTV 300 10-Current	<b>Part No.</b>	RVE-212
		<b>Fit Kit</b>	Z039.10529
<b>Notes</b>	Where not supplied use original fittings	<b>dB Killer</b>	SCEXDBK34 (TYPE NN)



Thank you for purchasing your Scorpion Silencer.

Care of your exhaust: Please refrain from cleaning silencer with heavy solvents or abrasives!

Vielen Dank Für den kauf eines Scorpion Schalldampfers! Pflegehinweis: Bitte verwenden Sie niemals Scheuermittel oder aggressive Reiniger zur Pflege Ihres Auspuffes!

Merci d'avoir choisi un echappement Scorpion.

Entretien de votre silencieux: Ne pas utiliser de solvants ou de produits abrasifs!

Muchas gracias por adquirir un Silencioso Scorpion. Le recomendamos no limpiar el silencioso con productos abrasivos o aquellos que contengan disolventes.



STAY CONNECTED TO RED POWER.